

## Sjphone 1.65 setup HowTo

You may download SjPhone from: <http://www.sjphone.org/sjp.html>

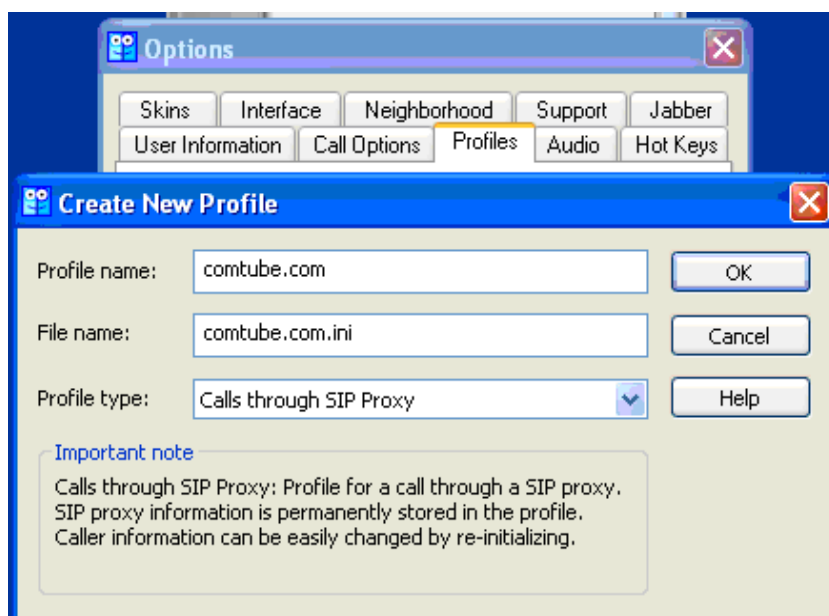
### Creating profile

First of all you should create a profile for comtube.com.

#### 1. Launch Sjphone



2. Open menu «**Menu - Options...**». Select «**Profiles**» tab. Here you can create and manage SIP profiles. To create a new profile press «**New**».

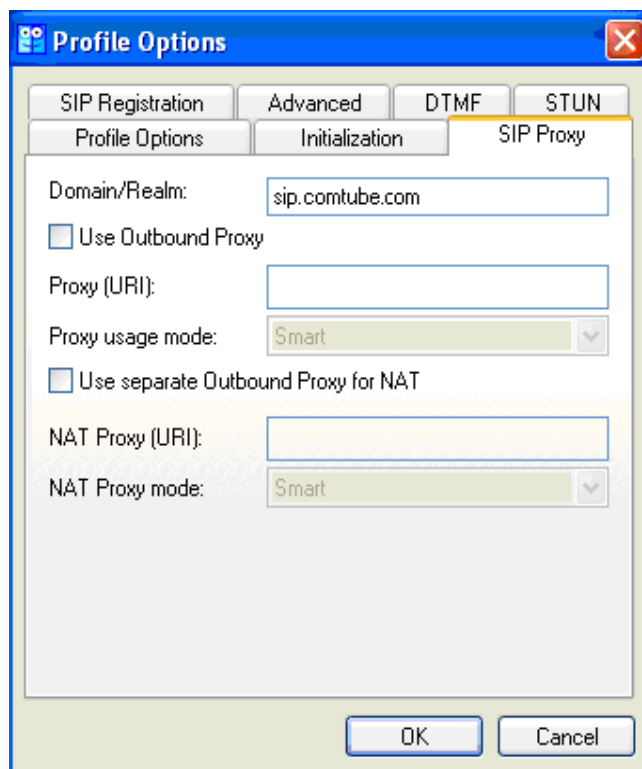


Fill the following fields:

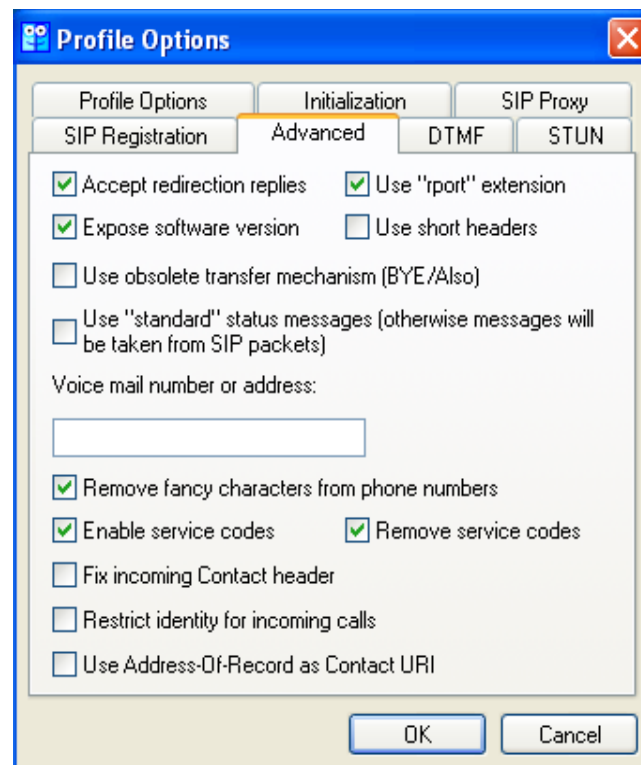
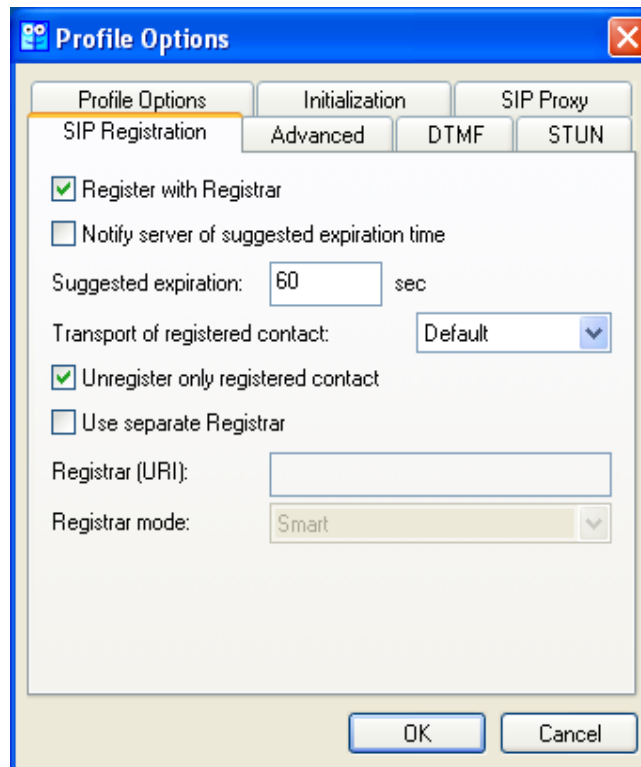
«**Profile name**» (for example, comtube.com).

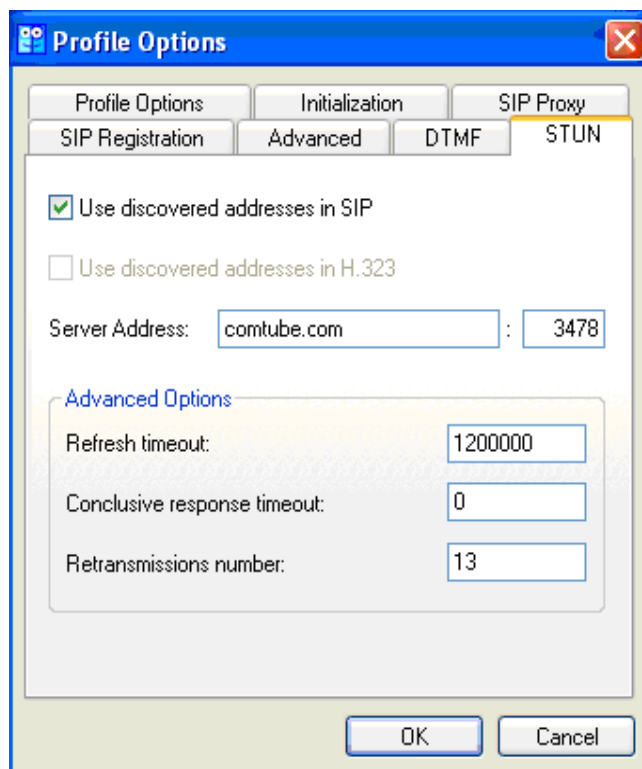
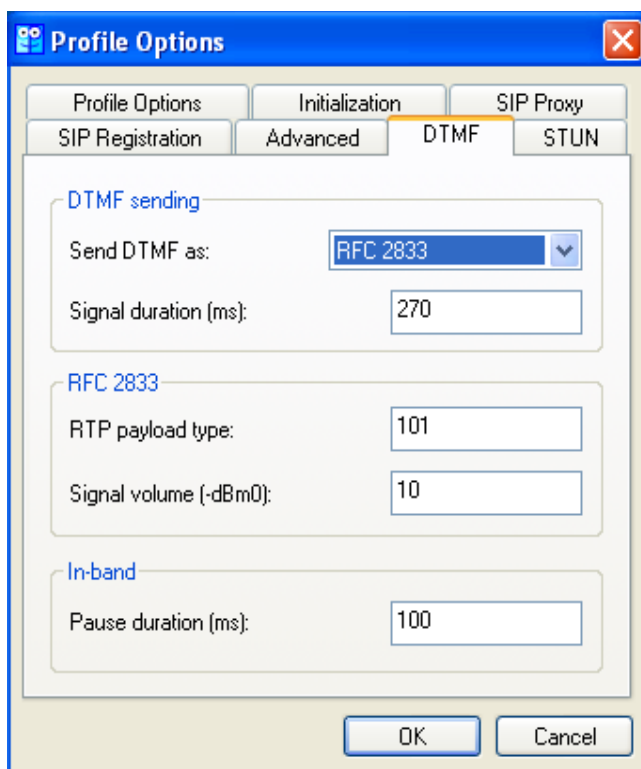
«**Profile type**» - anything (it's a remark; for example, «**Calls through SIP Proxy**»).

3. To continue setup, press «OK». Go to «**SIP Proxy**» tab and fill it like this:



Also fill the following tabs.

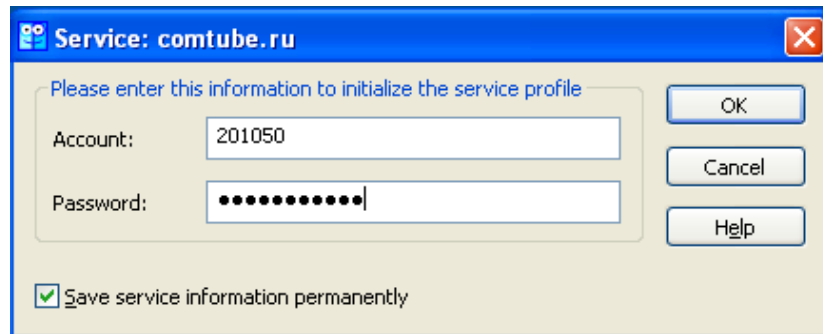




**NOTE!**

We recommend to use STUN server only in case of problems with incoming or outgoing calls.

4. After specifying parameters press «OK». The program will ask for login and password. Enter your 6-digit SIP number (for example, 123456) and password (password at comtube).



Press «OK» and program will attempt to register on our server. If registration is successful, you'll see something like this:



## Possible problems

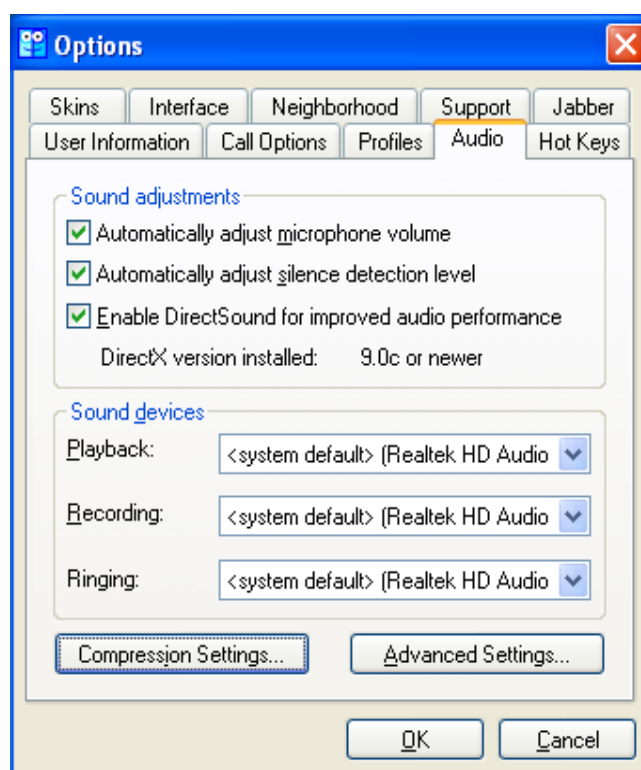
If you see this message



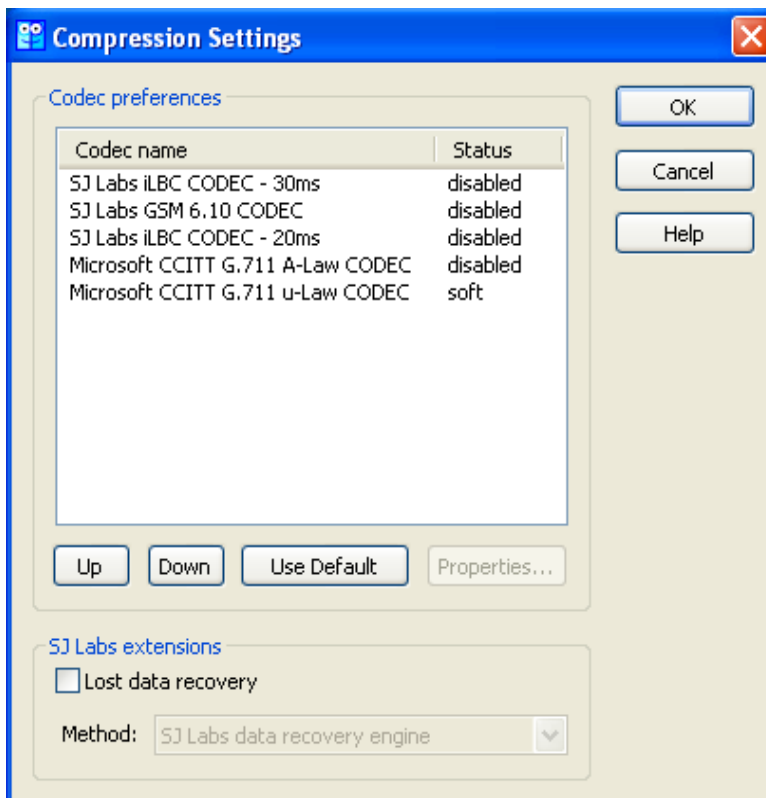
1. You provided wrong login and/or password.
2. You specified wrong server name/address («**SIP Proxy**» parameter).
3. Your firewall or provider blocks our server.

## Codec setup

To setup codecs select «**Menu - Options...**» menu and go to «**Audio**» tab.



Press «**Compression Settings...**». A corresponding window will appear, where you can set codec priority and turn unneeded codecs off. For example, for low speed internet connection, turn «**G.711 A-Law**» and «**G.711 u-Law**» off.



Note, that our platform does not support «**GSM**» codec.

## Outgoing calls

To make an outgoing call dial a number in international (E.164) format:

«**country code**» «**city/operator code**» «**phone number**»

**Example:** 74959610008

### NOTE!

Do not use local prefixes for long distance and international calls, like 8 and 810 in Russia - only international format is allowed. Also, do not specify leading "+" sign.

Your account's balance **MUST BE POSITIVE** for outgoing calls!

## Incoming calls

To connect to comtube's SIP number from PSTN, dial access number:

+7 (495) 956-88-50

When you hear the answer, dial 6-digit SIP number. For example, 104705.

If someone calls you when you are offline, voicemail will answer the call and attempt to record a message (or receive fax). You can see new messages on «**Voicemail - Incoming**» page.

### NOTE!

Your account's balance **MUST BE POSITIVE** for incoming calls!

## Internal calls

To make a call to other comtube user, dial 6-digit number, for example 104706.

Comtube project  
Tel/Fax: **+7 (495) 961-00-08**  
E-mail: [support@comtube.com](mailto:support@comtube.com)  
www: [www.comtube.com](http://www.comtube.com)